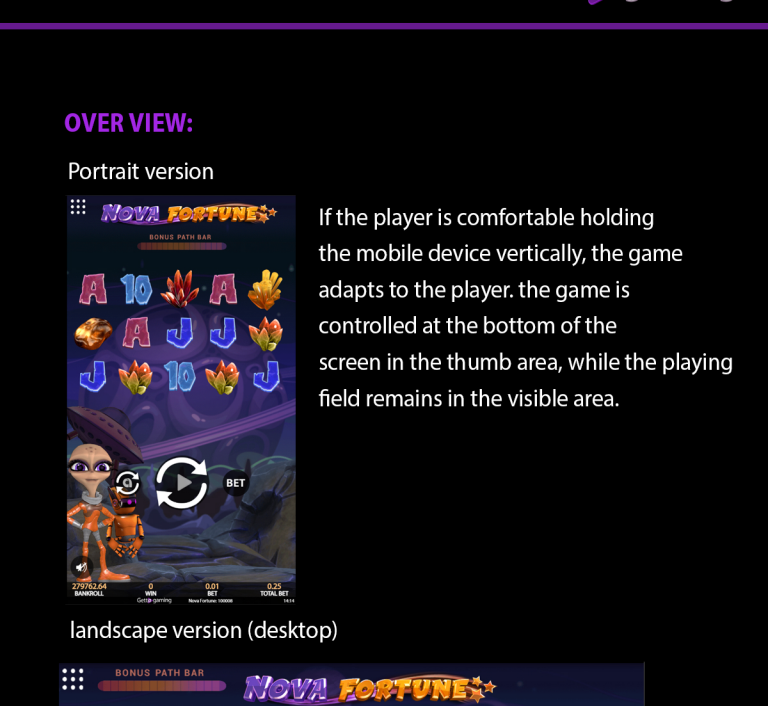


Video Slot game
97% RTP

NOVA FORTUNE



OVER VIEW:

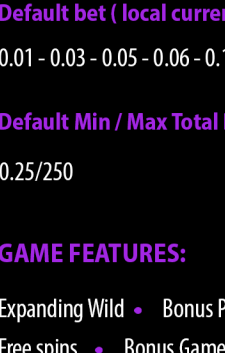


NOVA FORTUNE

An interstellar expedition was sent to explore mineral-rich stars. Thanks to Nova's discoveries you will be able to win a star full of treasures to take with you to your home planet.

OVER VIEW:

Portrait version



If the player is comfortable holding the mobile device vertically, the game adapts to the player. The game is controlled at the bottom of the screen in the thumb area, while the playing field remains in the visible area.

landscape version (desktop)



GENERAL INFORMATION:

Game Type:

Slot game

Reel Type:

Spinning Reels

Reels, Lines:

5 Reels, 3 rows, 25 lines

Default bet (local currency)

0.01 - 0.03 - 0.05 - 0.06 - 0.10 - 0.25 - 0.50 - 1 - 2 - 3 - 4 - 5 - 7 - 8 - 9 - 10

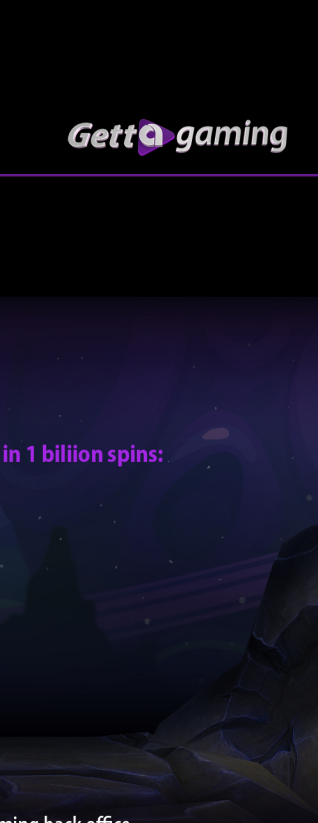
Default Min / Max Total Bet (local currency)

0.25/250

GAME FEATURES:

Expanding Wild • Bonus Path • Pick me icon

Free spins • Bonus Game



PAYOUTS INFORMATION:

Return to player (%)

97.00%

Max payout for times total bet observed in 1 billion spins:

696

Hit Frequency (%)

78.91%

Volatility:

6,06 - Medium/high

LIMITATIONS:

Player Limits: Regulated by the Getta Gaming back office.

Other: Play for fun • Variable bet values

TECHNICAL INFORMATION:

Game ID : 100008

User interface: adaptive

Screen footprint: 1280x720 desktop/ mobile

GAME THEME & GRAPHICS

The symbols are carefully matched to the theme.

High symbols are characterized as planet minerals as: Quartz crystals, gold stone, amber stone.

The low symbols are characters A-10 glittering gems.

pickme icon is the space ship.

Bonus icons is Nova's character.

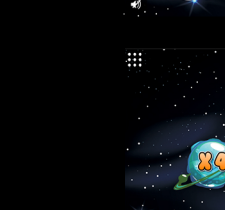
Wild icon is Nova's robot research scanner.

GAME CONTROL PANEL:

Button	Functionality
	Click on the Spin button to spin the reels in the selected bet.
	Click on the Stop button in order to stop the spin.
	Click on the Auto Play button in order to select the Auto Play value. This button will open a selection of predefined values. Once the value is selected the Auto Play will commence.
BET	Click on the BET button will open bet options to set accordingly via a number of predefined values.
	Pressing on the + and - buttons will increase and decrease the bet accordingly via a number of predefined values.
	Auto play selection menu. Note that the Until Stop option is shown only in jurisdictions that permit it. Auto play pauses for special features, such as Bonus Rounds and Free Spin. Auto play can be stopped at any time by re-pressing the Spin (Stop) button.
	Pressing on this button opens the Paytable and game rules.

GAME CONTROL PANEL:

Pop up with Autoplay button



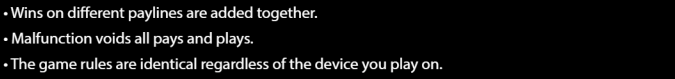
Pop up with Bet (stake value) button



GAME BAR

bankroll amount - win amount - Bet per line amount

Total bet amount, game numer ID, Time clock



GAME FEATURES:

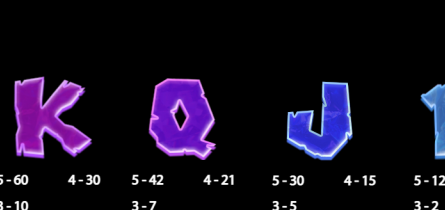
WILD

• When ever a Wild symbol appears on reel 3 it triggers freespins rounds and covers all of the positions on this reel.



PICK ME

• When the Wild symbol appears at the same time anywhere on reels 1 and 5, players have the chance to play the Pick Me game.
• Two Pick Me symbols will pop up on the reels. Players must click on one of the symbols to reveal their prize.
• All Pick Me prizes are then added to the total payable win amount.



BONUS

Fill the Bonus path with Quartz crystal
• Collect total x15 multipliers with Wild icons to trigger the bonus game.

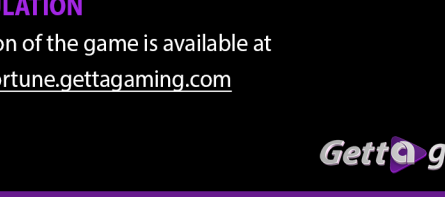
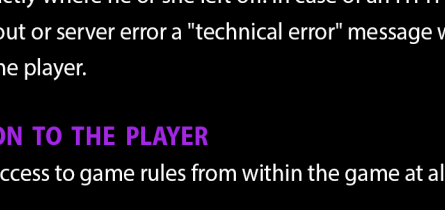


GAME FEATURES:

BONUS GAME

Contains 3 stages of object selection:

In the first and second stage, select 3 objects for which you receive an instant cash prize. The third stage, select one object to obtain a multiplier for all amounts accumulated.



GENERAL RULES:

- All wins are multiplied by the bet per line.
- All symbols pay from left to right on consecutive reels starting from the leftmost reel.
- Only the highest win is paid on an active payline.
- Wins on different paylines are added together.
- Malfunction voids all pays and plays.
- The game rules are identical regardless of the device you play on.
- All the game results are random.

PAY LINES:

GAME PAYTABLE:

5-250 3-40	4-120 3-30	5-180 4-90 3-30	5-150 4-75 3-25	5-120 4-60 3-20
5-75 3-12	4-36 3-10	5-60 4-30 3-7	5-42 4-21 3-5	5-30 4-15 3-2

RANDOMIZATION

Random Number Generator (RNG) The algorithm used for random number generation (RNG) is Fortuna, physical random number generator exploiting an elementary quantum optics process.

Fortuna has been evaluated and certified by the Trisigma, the recognized Netherlands company in charge of measurement science, testing and compliance. It confirmed that the quality of its random output complies with the highest requirements.

See the Certificate of Conformity and read the Test Report on TBD <http://www.idquantique.com/>

MALFUNCTION MANAGEMENT

If a player attempts to access a game using an invalidated session, (for example, due to inactivity or system restart) an error message is displayed in the game. The player can then log on again and resume game play. The game state is always stored so the player can resume game play exactly where he or she left off. In case of an HTTP error, network timeout or server error a "technical error" message will be displayed to the player.

INFORMATION TO THE PLAYER

Players have access to game rules from within the game at all times.

GAME SIMULATION

A demo version of the game is available at <http://nova-fortune.gettagaming.com>